

## Setup

# USB-to-Serial Driver Installation

*In this lesson, you will learn how to install the Prolific USB-to-Serial Cable driver. Make sure you have administrative privileges on the computer before you begin.*

You will need:

1. An Internet connection
2. A VEX USB-to-Serial Programming cable

1. In a web browser, go to [www.robotc.net/download/cortex](http://www.robotc.net/download/cortex), locate the section labeled "Download Prolific Driver to use the USB-to-Serial adapter". Download the appropriate driver for your version of the Windows Operating System.

ROBOTC.net :: Download ROBOTC for Cortex, a VEX Programming language for VEX robots. Start prog -

<http://www.robotc.net/download/cortex/>

ROBOTC Home Download

## ROBOTC Downloads - CORTEX & PIC (Original VEX)

**Download ROBOTC for CORTEX & PIC**  
 Platforms: Cortex, PIC (Original VEX)  
 Version 3.04  
 Date Posted: Oct. 10, 2011

Have a Building License?  
[Click here to see how to install the Building License file >>>](#)

### Installing more than one version of ROBOTC?

ROBOTC 3.0 introduces a new and improved way of managing your ROBOTC soft keeping all of your software up-to-date while minimizing the number of download

Once you have downloaded and installed **any** version of ROBOTC 3.x, you have ever excluded). **No Additional downloads** of ROBOTC software are required; in fact, **don't** versions.

[Click here for more instructions >>](#)

### Additional Downloads:

**Download the VEX CORTEX Device Driver:**

- VEX Programming Driver (32-Bit)
- VEX Programming Driver (64-Bit)
- VEX Programming Driver - FAQ & Instructions

**Download Prolific Driver to use the USB-to-Serial adapter:**

- Prolific USB to Serial Driver (Windows XP)
- Prolific USB to Serial Driver (Windows 7, VISTA)

- 1a. Visit [www.robotc.net](http://www.robotc.net)

Go to [www.robotc.net/download/cortex/](http://www.robotc.net/download/cortex/)

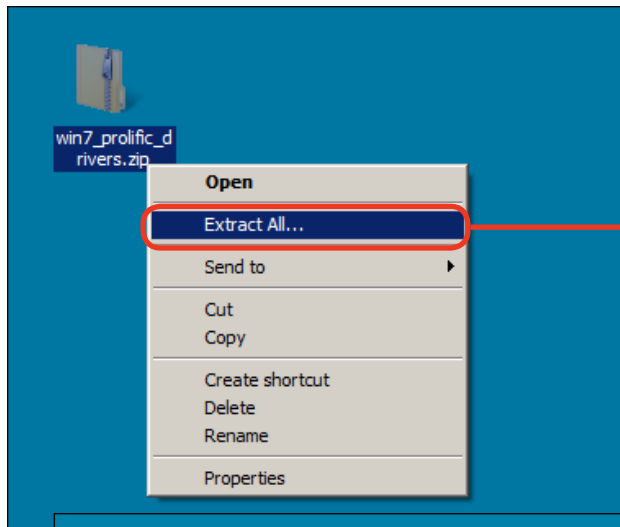
- 1b. **Download**

Locate the appropriate driver for your Operating System and download it.

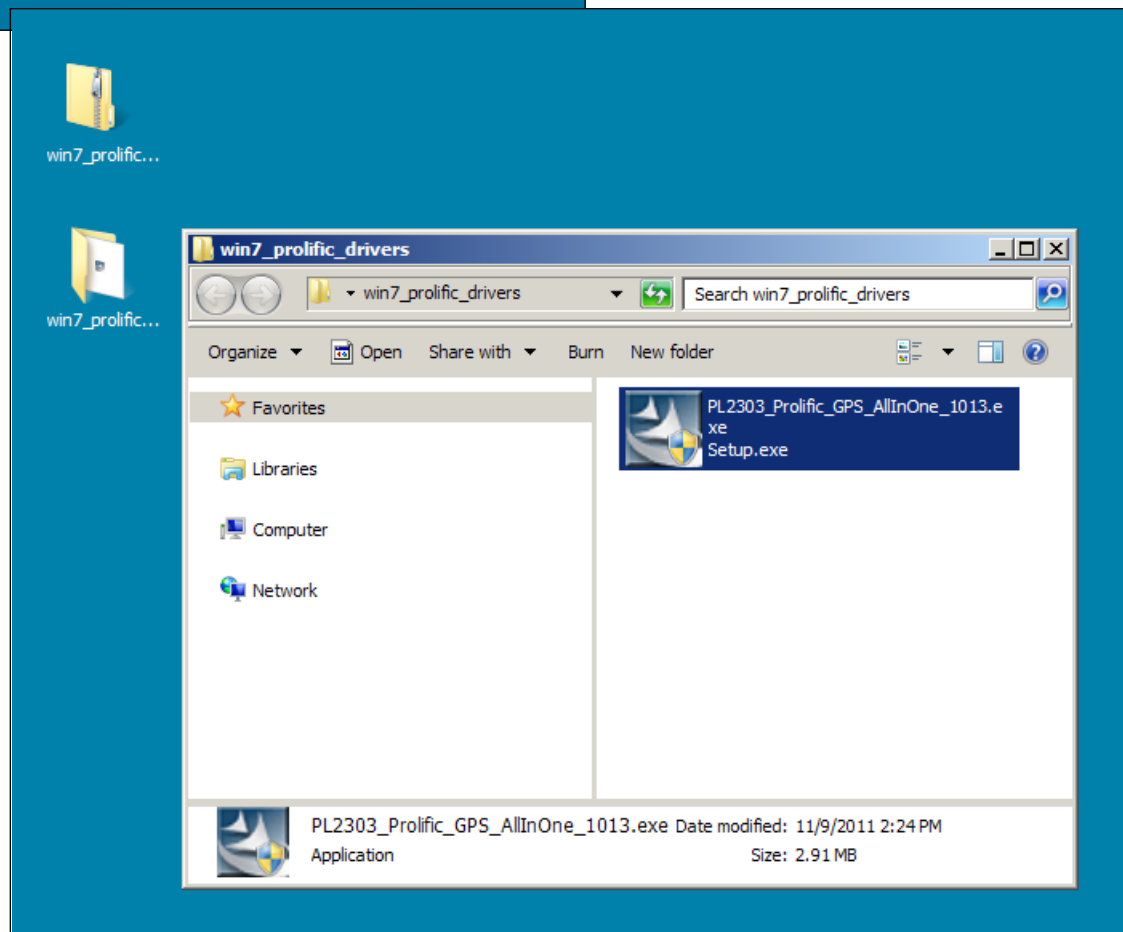
## Setup

### USB-to-Serial Driver Installation

2. The installation file needs to be extracted from the downloaded file. Extract the installation file by right-clicking on the downloaded file, selecting "Extract All...", and following along with the prompts on your computer.



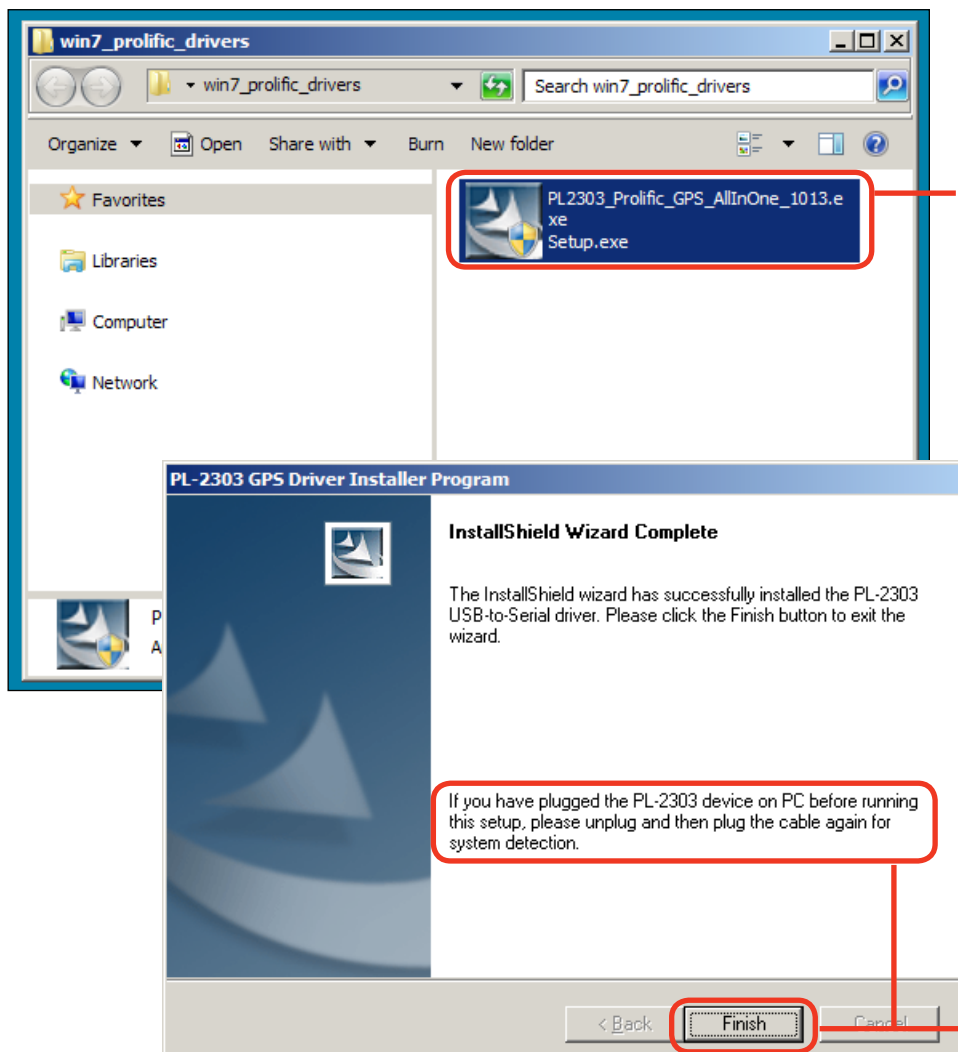
- 2a. Extract the file**  
Right-click on the file you downloaded and choose "Extract All..."



## Setup

### USB-to-Serial Driver Installation

3. Once the installation file has been extracted, double-click on it to begin the installation process. Again, follow along with the prompts on your computer to install the driver.



The image shows a Windows Explorer window titled "win7\_prolific\_drivers" with a search bar containing "win7\_prolific\_drivers". The file list contains one file: "PL2303\_Prolific\_GPS\_AllInOne\_1013.exe Setup.exe". A red box highlights this file. A red arrow points from the text "3a. Start the Installation" to this file.

Below the Explorer window is the "PL-2303 GPS Driver Installer Program" window. The title bar reads "PL-2303 GPS Driver Installer Program". The main content area says "InstallShield Wizard Complete" and "The InstallShield wizard has successfully installed the PL-2303 USB-to-Serial driver. Please click the Finish button to exit the wizard." A red box highlights a paragraph of text: "If you have plugged the PL-2303 device on PC before running this setup, please unplug and then plug the cable again for system detection." A red arrow points from this text to the "Finish" button in the bottom right corner of the window. A red arrow also points from the text "4a. Follow Prompts" to the "Finish" button.

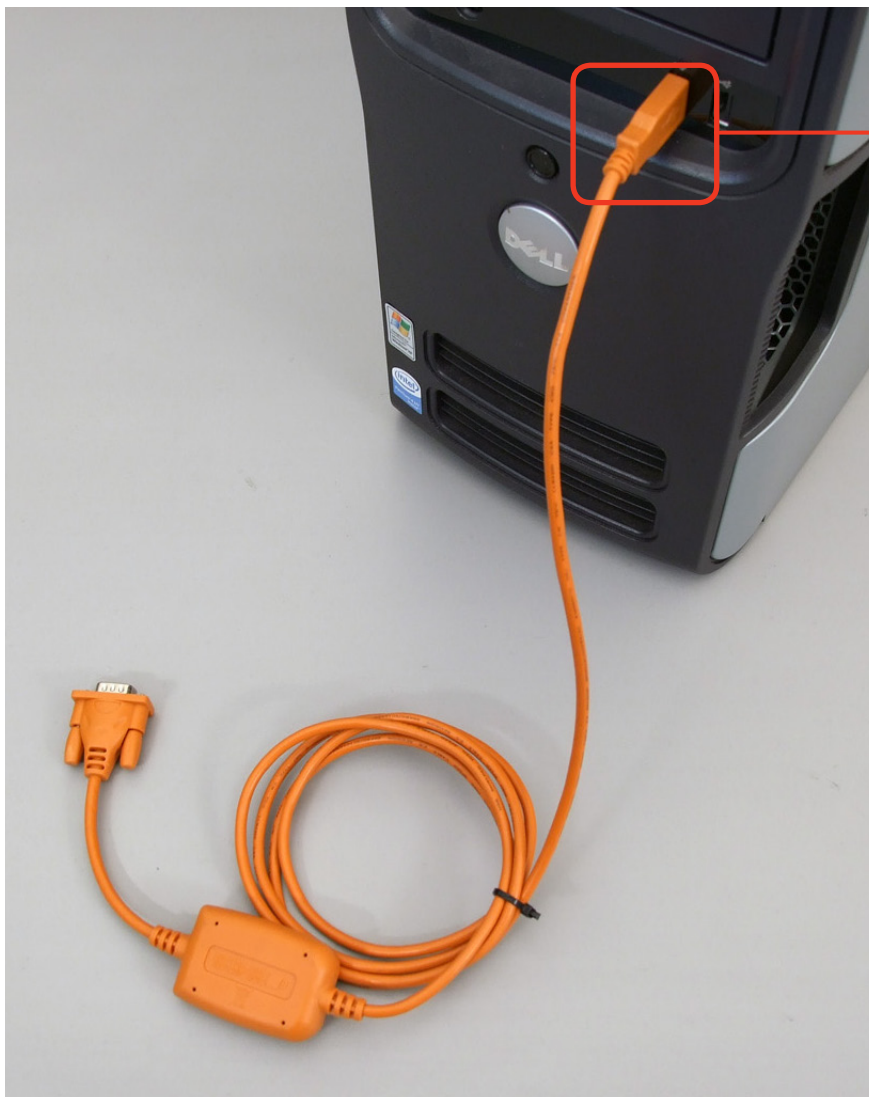
**3a. Start the Installation**  
Double-click on the installation file to start the driver installation.

**4a. Follow Prompts**  
Complete the installation according to the onscreen instructions.

## Setup

### USB-to-Serial Driver Installation

4. Connect the USB-to-Serial Cable to your computer to complete the installation. Windows should recognize the cable and successfully add the new hardware.



- 4a. **Finish the Installation**  
Connect the USB-to-Serial cable to your computer to complete the installation.